

GGPS1 Antibody (Center)
Affinity Purified Rabbit Polyclonal Antibody (Pab)
Catalog # AP16807c**Specification**

GGPS1 Antibody (Center) - Product Information

Application	WB,E
Primary Accession	O95749
Other Accession	O6F596 , O9WTN0 , P56966 , NP_004828.1 , NP_001032354.1
Reactivity	Human
Predicted	Bovine, Mouse, Rat
Host	Rabbit
Clonality	Polyclonal
Isotype	Rabbit IgG
Calculated MW	34871
Antigen Region	174-202

GGPS1 Antibody (Center) - Additional Information**Gene ID** 9453**Other Names**

Geranylgeranyl pyrophosphate synthase, GGPP synthase, GGPPSase, 251-, (2E, 6E)-farnesyl diphosphate synthase, Dimethylallyltranstransferase, Farnesyl diphosphate synthase, Farnesyltranstransferase, Geranylgeranyl diphosphate synthase, Geranyltranstransferase, GGPS1

Target/Specificity

This GGPS1 antibody is generated from rabbits immunized with a KLH conjugated synthetic peptide between 174-202 amino acids from the Central region of human GGPS1.

Dilution

WB~~1:1000

E~~Use at an assay dependent concentration.

Format

Purified polyclonal antibody supplied in PBS with 0.09% (W/V) sodium azide. This antibody is purified through a protein A column, followed by peptide affinity purification.

Storage

Maintain refrigerated at 2-8°C for up to 2 weeks. For long term storage store at -20°C in small aliquots to prevent freeze-thaw cycles.

Precautions

GGPS1 Antibody (Center) is for research use only and not for use in diagnostic or therapeutic procedures.

GGPS1 Antibody (Center) - Protein Information

Name GGPS1

Function Catalyzes the trans-addition of the three molecules of IPP onto DMAPP to form geranylgeranyl pyrophosphate, an important precursor of carotenoids and geranylated proteins.

Cellular Location

Cytoplasm. Cytoplasm, perinuclear region. Cytoplasm, myofibril, sarcomere, Z line

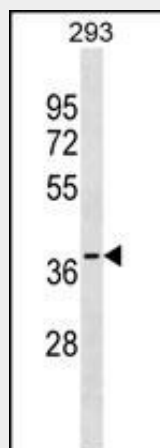
Tissue Location

Abundantly expressed in testis (PubMed:10026212, PubMed:9741684). Found in other tissues to a lower extent (PubMed:10026212, PubMed:9741684). Expressed in dermal fibroblast and skeletal muscle (PubMed:32403198).

GGPS1 Antibody (Center) - Protocols

Provided below are standard protocols that you may find useful for product applications.

- [Western Blot](#)
- [Blocking Peptides](#)
- [Dot Blot](#)
- [Immunohistochemistry](#)
- [Immunofluorescence](#)
- [Immunoprecipitation](#)
- [Flow Cytometry](#)
- [Cell Culture](#)

GGPS1 Antibody (Center) - Images

GGPS1 Antibody (Center) (Cat. #AP16807c) western blot analysis in 293 cell line lysates (35ug/lane). This demonstrates the GGPS1 antibody detected the GGPS1 protein (arrow).

GGPS1 Antibody (Center) - Background

This gene is a member of the prenyltransferase family and encodes a protein with geranylgeranyl diphosphate (GGPP) synthase activity. The enzyme catalyzes the synthesis of GGPP from farnesyl diphosphate and isopentenyl diphosphate. GGPP is an important molecule responsible for the C20-prenylation of proteins and for the regulation of a nuclear hormone receptor. Alternate transcriptional splice variants, both protein-coding and

non-protein-coding, have been found for this gene. [provided by RefSeq].

GGPS1 Antibody (Center) - References

Choi, H.J., et al. Yonsei Med. J. 51(2):231-238(2010)
Raz, T., et al. Blood 110(6):2102-2109(2007)
Miyagi, Y., et al. J. Biochem. 142(3):377-381(2007)
Lamesch, P., et al. Genomics 89(3):307-315(2007)
Zhao, Y., et al. Sci. China, C, Life Sci. 43(6):613-622(2000)